

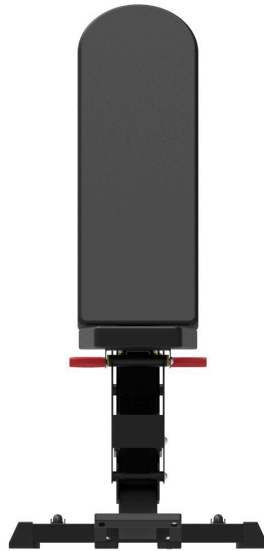


Multi-Function FID Bench BSB

SKU: TZ-Q1020

Product Images





Short Description

Introducing the new Titanium Strength BSB Black Series Bench heavy-duty flat/incline/decline bench designed to fit perfectly with the [B100](#) or [B200](#) multi-function machines.

Engineered with heavy-gauge steel and fitted with high-density foam padding, this versatile bench offers 8 different levels of adjustment, making it easy to find the correct sitting or lying position for any exercise.

If you are looking for a sturdy and safe bench: the Black Series Bench is your bench!

Description

Why you should buy the Titanium Strength BSB Black Series Bench?

Because it is an ideal bench for intensive training as well as safe. And if you're thinking of buying the B100 or B200 multi-function you must have this bench!

Do your best in your lower and upper body workouts with the new Black Series Bench!

FEATURES:

- Built to last: Designed with thick heavy-duty high tensile steel and finished in environmentally-friendly powder coating, the Black Series Bench will provide years of hard-wearing use.
- Move around with easy move: Designed to handle up to 662 lb, this compact flat/incline/decline bench is strong enough for studio gym use, while designed to fit comfortably into any home. The convenient handle and dual rear transport wheels make moving, setting up and removing this bench one seamless, smooth motion.
- Fully adjustable from -15 to 85 degrees Fully adjustable degrees: This easy-to-adjust, versatile bench offers 8

different levels of incline/flat/decline on the backrest and 2 levels available on the seat pad, making it easy to find the correct sitting or lying position for any exercise.

- Designed for comfort and durability: is designed for comfort with durable high-density foam padding and commercial vinyl equipped with a rip-stop mesh backing to help prevent rips and tears.

SPECIFICATIONS

- 662 lb Weight Rating
- Assembled Dimensions Flat - (L)53"x (W) 21" x (H)18"
- Weight: 48 lb
- Backrest adjustable to 8 positions
- Seat adjustable to 2 positions
- Convenient handle and dual rear transport wheels
- Commercial grade upholstery with rip-stop mesh backing
- Durable high-density gym-quality foam padding
- Lifetime Structural Warranty
- Assembly required

About Titanium Strength:

Leading brand in the sale of equipment and machines for strength and cardio training.

Additional Information

Use	Professional
Color	Black
Brand	Titanium Strength
Weight (lbs)	47.300000
Width cms.	53
Height cms.	47
Length cms.	53"
Max Load (kg)	300
Product Line	Black Series